

Property reference number: - 185-1342- (HARWELL)

Home to a family with 2 teenagers & 1 primary aged child.

They are looking to house swap in the school holidays.

KEY INFORMATION...

Bedrooms available:-	Double:- 1 (kingsize bed), single:- 1, and 2 mid-sleeper beds (max 4/6 people)
Children welcome?-	Yes any age group are welcome but need to be aware of raised garden
Pets that live here:-	They don't have any pets
Re-dogs:-	They could not consider a dog staying here.



This late 1970's detached house is situated on a very quiet road in the beautiful village of Harwell, set in the lovely Oxfordshire countryside. There is good access to the A34, and not far from the Ridgeway. There is a good bus service into nearby Oxford (12 miles) , Abingdon and Didcot (2 miles). This is a wonderful area to holiday with so many interesting places to explore as well as a good number of tourist attractions.

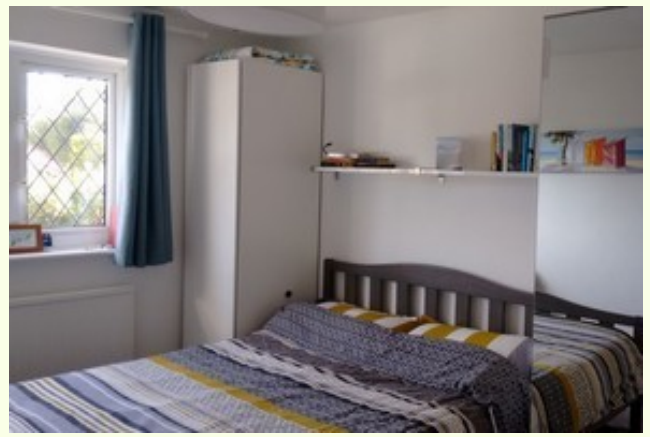
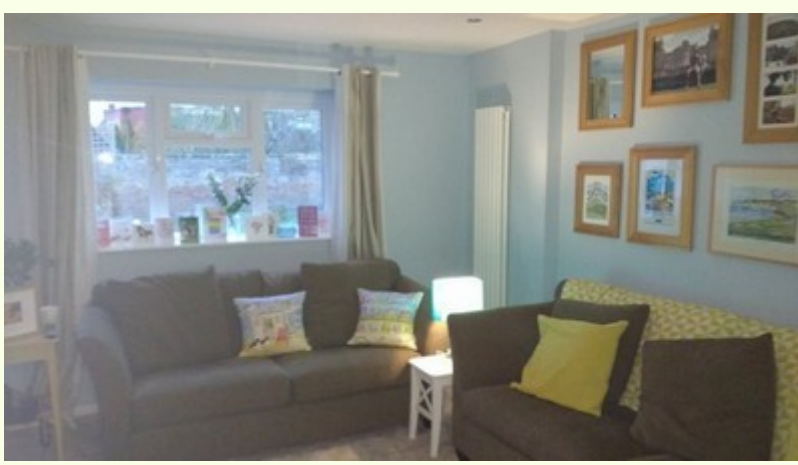
The home is within 5 minutes walk of the local butcher's and village shop as well as the pub, and then 3 miles away are more shops and eating places. There is off-road parking by the house.

Leading out from the delightful kitchen are French doors onto the patio area. Here are garden table & chairs with a BBQ. There are concrete steps up into an enclosed grassy garden which has a 10 foot enclosed trampoline.



The family worship at St Matthews, Harwell, where there are about 90 people in the Sunday morning congregation and there is a good mix of traditional and contemporary styles of worship. There is also an evening service. The church is walking

distance from their home and is a very friendly and welcoming fellowship. More info on their very interesting website :- www.hcchurches.org



Sport and Leisure	Most sports can be accommodated in the area as well as nearby Didcot with a wave swimming pool & Leisure Centre, Oxford Ice-Rink and Wantage Splash Park
Free park	Harwell Recreation Ground has very good play equipment, and a large field for play.
Local places of interest	Abingdon Museum, Ridgeway, Wittenham Clumps, Abbey Meadows, Didcot Railway Museum, Millets Farm (PYO)
Entertainment/ Arts	Theatre & Family Events at the Didcot Cornerstone Arts Centre, Didcot cinema

<http://www.southandvale.gov.uk/tourism/>
<https://www.expedia.co.uk/Harwell.dx3000430094>

<https://www.dayoutwiththekids.co.uk/things-to-do/south-east-and-london/oxfordshire/didcot>

<https://www.experienceoxfordshire.org/things-to-do/>

