

**Property reference number: -2502-1881
(BAGTHORPE, nr NOTTINGHAM)**

Home to a couple who are looking to house swap
and they are fairly flexible as to the timing.

KEY INFORMATION...

Bedrooms available:-	2 double bedrooms are available (max:- 4 people)
Children welcome?-	This is best suited for adults but 12+ age group welcome.
Pets that live here:-	There are no pets here
Re-dogs:-	They could not consider a dog staying



This mid 1950's detached bungalow has a lovely location on a quiet lane in a small established residential area, and they face south with lovely views over open fields. It's included in the stunning *Hidden Valleys* area, near Underwood. There are 2-3 small towns within a 3-5 mile radius, and they are on the doorstep of Derbyshire Peak District, within 30 mins drive. It has miles of way-marked rural walks, cycle paths, and bridleways. And they are only a short distance from the Derbyshire Dales. This location offers great countryside and city activities. The nearest shop and pub are within half a mile.

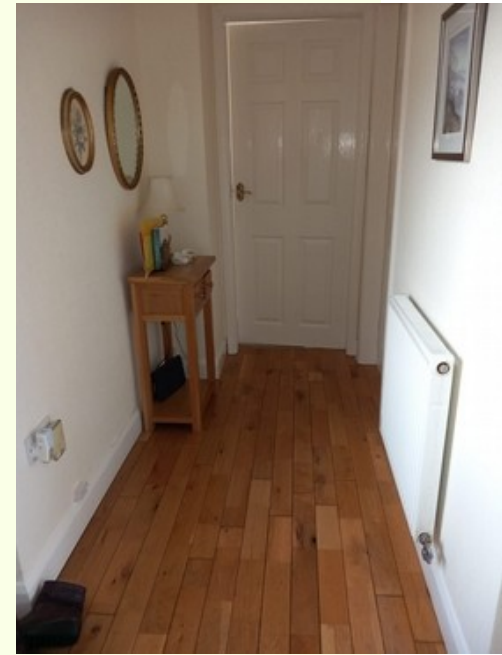
The bungalow comprises:- large kitchen, lounge, dining room, 2 double bedrooms and a snug. The bathroom has bath & shower. And there's a cloakroom with a toilet. The outside porch leads into the beautiful garden.

It's a family friendly garden, mostly laid to lawn with flower and shrub borders, and garden table and chairs. Being south facing it benefits from the sunshine. The bungalow stands well back from the road with lawn and shrubs in the front garden. There is plenty of off-road parking.

St Helen's Selston is an Anglican Church, one church- two buildings, with a good range of age groups worshipping together, and serving their community well with a Toddler Group, Filling Station, Community Cinema, Bible study and Quiet Space. More info on :-

<https://www.sthelensandstmarys.co.uk/>





Playground/ park/sport	There is a local park, golf course, swimming pool, and an activity centre offering bowling, badminton & gym.
Recommended places of interest	Newstead Abbey-5 miles, Rufford Abbey, Sherwood Forest, Nottingham city centre with many amenities, Wollaton Hall, Holme Pierpont, Matlock, & in 40 mins drive is Chatsworth House. 1 mile- Felley Priory Teashop and local pubs serving great food ..on their doorstep!

<https://www.visitbritain.com/en/destinations/england/nottingham>

<http://www.ilkc.com/Archived/2008/0817Bagthorpe.html>

<https://www.expedia.co.uk/Underwood.dx3000444483>

<https://www.visit-nottinghamshire.co.uk/>

<https://www.visitengland.com/things-to-do/nottingham>

<https://www.whatsoninnottingham.com/attractions-places-to-visit/>

MORE PHOTOS BELOW

